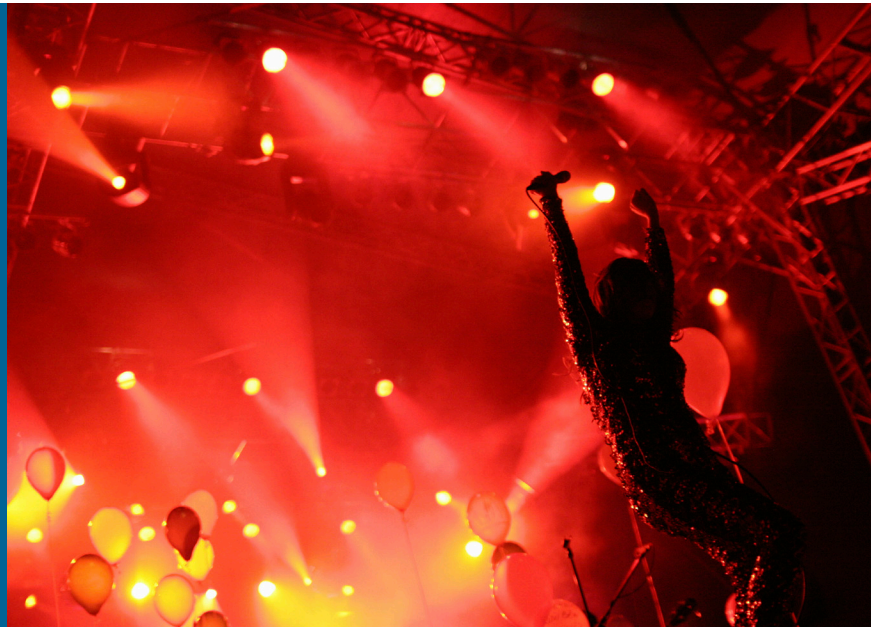


APPLICATION BRIEF

LIVE ENTERTAINMENT



Live Entertainment Stage with Martin MAC Allure Lighting, and Sound by JBL and Crown



OPPORTUNITY

Designers use sound and light to craft amazing atmospheres to fit any artist's style. The right audio and lighting technology fills the space with perfect sound in every corner accompanied with luminance that seems to be woven around every note. This is a serious art form, doing it for tour is a serious art form with intense time restrictions. Speakers and lights must be robust enough to survive repeated packing, transport and unpacking; and easy to fly, set and configure.



SOLUTION

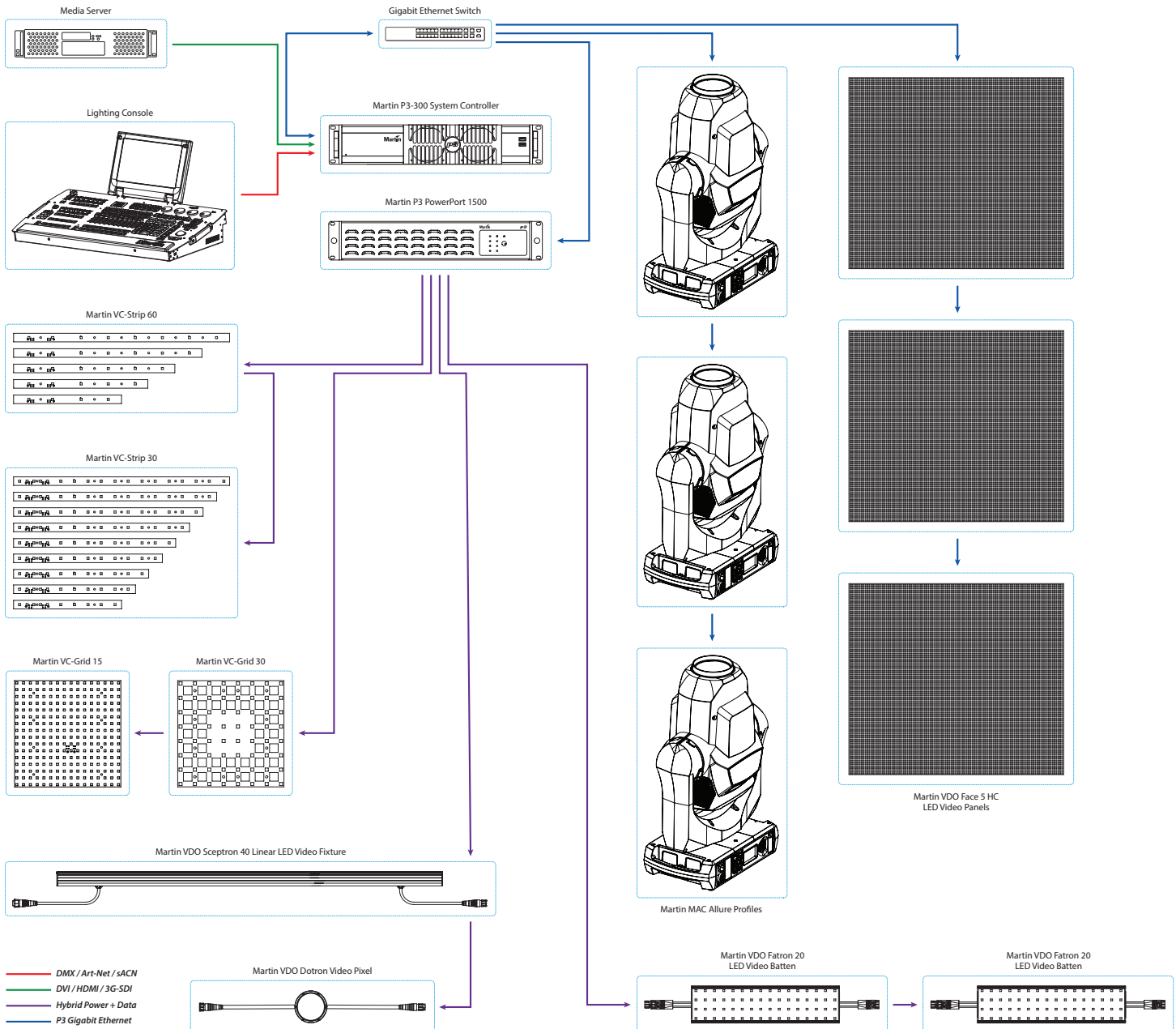
Trust HARMAN Professional Solutions industry-leading brands including JBL, Martin and Crown to provide solutions purpose-built for tour. JBL VTX line array loudspeakers were designed from scratch to address, not only audio aspects, but the full scope of challenges of modern tour sound professionals, rental companies, FOH engineers and live production crews. Our patented JBL rigging mechanism and redesigned suspension system, combined with reduced weight and optimized transportability provide optimal streamlined deployment and setup; while JBL's latest in transducer and waveguide technology perform with unparalleled clarity and coverage.

The Crown I-Tech HD series amplifiers are some of the most technologically advanced professional touring amplifiers on the market today, building on over 70 years of the innovation and invention Crown is known for. The I-Tech HD amplifiers include a complete set of dedicated digital signal processing features, along with a true Ethernet backbone for easy and reliable connectivity. Color LCD provides diagnostics and presets for easy setup while SLM (Sweep Load Monitoring) provides system-level diagnostics. A wizard based software interface provides easy system-level changes. All this with Crown's no compromise quality and low AC current draw makes it a premium quality, robust tour amplifier.

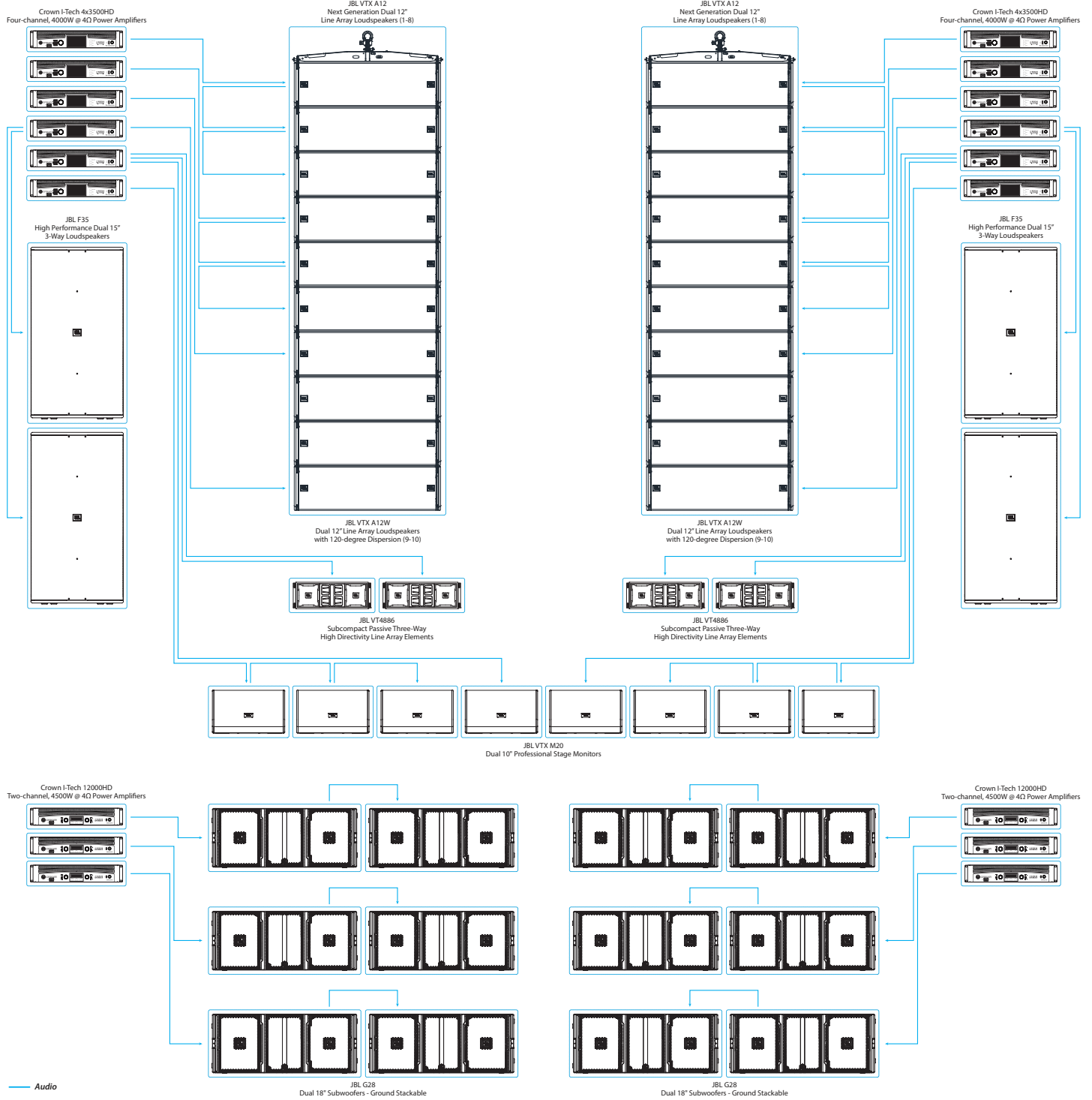


To bring light and life to the space, the Martin MAC Allure provides all the tools necessary to design superb lighting effects including dimmer, strobe, color mixing, gobos, iris, prism, zoom, focus, pan, tilt, dynamic projection and mid-air effects. In addition, this fully-featured moving head is the first of its kind to combine a proprietary, solid state RGBW additive color mixing engine, a 7-segment pixelated beam and onboard P3 and DMX controllability that lets users swiftly alternate or mix between control protocols. The MAC Allure streamlines integration of solid state (LED) color mixing into profile fixtures. The pixelated beam divided into seven individually-controlled, full color segments gives designers new options that were previously not possible.

LIVE ENTERTAINMENT LIGHTING WITH MARTIN - SYSTEM DIAGRAM



LIVE ENTERTAINMENT AUDIO WITH JBL AND CROWN - SYSTEM DIAGRAM





JBL VTX A Series

JBL VTX line array loudspeakers were designed from scratch to address, not only audio aspects, but the full scope of challenges of modern tour sound professionals, rental companies, FOH engineers and live production crews. Our patented JBL rigging mechanism and redesigned suspension system, combined with reduced weight and optimized transportability provide optimal streamlined deployment and setup; while JBL's latest transducer technology and high-frequency waveguide perform with unparalleled sensitivity and coverage.



JBL VTX M20 and VTX M22 Professional Stage Monitors

VTX M Series is comprised of the dual 10" VTX M20 and the dual 12" VTX M22 professional stage monitors, both featuring high performance differential drive woofers and the large-format D2 dual-diaphragm dual voice-coil high frequency driver. The option of Single-Channel (Passive) or Dual-Channel (Bi-Amp) operation modes comes standard, allowing the user to choose the right option for the application, with no compromise in output power or performance. These full-featured premium monitors are lightweight, ergonomic, and tour-ready for the most-high profile concert or broadcast events.



Crown I-Tech HD Series Power Amplifiers

Inside and out, the I-Tech HD Series are some of the most technologically advanced professional touring amplifiers on the market today. I-Tech HD amplifiers are available in 2 and 4 channel models. Analog, AES3, and CobraNet, are fully routable to any of the outputs. Each channel features a complete compliment of OMNIDRIVEHD™ Processing, including the acclaimed LevelMAX™ Limiter Suite, and support for linear phase FIR filters as used in the latest JBL V5 loudspeaker tunings.



Martin MAC Allure Profile

The MAC Allure Profile features a novel RGBW light engine with unique 7-segmented beam control. With instant color control and pixelated beam, it enables dynamic projection and mid-air effects, previously not possible. The proprietary light engine sets new standards in compactness and efficiency. The first lighting fixture to incorporate Martin's P3 control, the pixelated beam can still be controlled or pixel-mapped via DMX and Art-Net protocols, however, switching or cross-fading to P3 or vice versa is now instantly possible.



Martin P3 System Controller

P3 brings creative LED, video panels & fixtures together into one visual canvas; allowing all to be treated as one and to prevent the need for dedicated control solutions for each. The P3 System Controllers can control the new Martin MAC Allure Profile as well as the entire range of Martin LED video products. P3 offers the freedom to use the most suited tool for each vision. Whether using video content, traditional DMX controls, or a mix of control methods.



JBL F35 High Performance Dual 15" 3-Way Loudspeaker

Designed to address a wide range of applications where high-impact, high-fidelity audio needs to be delivered with the form factor of a trapezoidal full-range system, F35 can be the go-to choice for customers needing high-power side-fills, mains speakers, or a V5-compliant high-performance compliment to a larger VTX system. This system has an exceptional power-to-weight ratio thanks to its lightweight, Differential Drive 15" and 8" transducers, and it benefits from proven JBL technologies, including a multi-band Progressive Transition Waveguide and the high-performance D2 high frequency driver.

