





YOUR ONE SOLUTION FOR

BARS & RESTAURANTS

BROADCAST RADIO

BROADCAST TV

CASINOS

CINEMAS

CONVENTION CENTERS

CORPORATE

CRUISE SHIPS

eSPORTS

GOVERNMENT

HEALTHCARE

HIGHER EDUCATION

HOTELS

HOUSES OF WORSHIP

K-12/PRIMARY EDUCATION

KARAOKE

MUSEUMS

NIGHTLIFE

PERFORMING ARTS

PORTABLE PA SYSTEMS

RECORDING

RETAIL DESTINATIONS

STADIUMS & ARENAS

THEMED ATTRACTIONS

TOUR

TRANSPORTATION

THE HARMAN FAMILY



MICROPHONES, HEADPHONES



VIDEO SWITCHERS, NETWORKED AV ENCODERS AND DECODERS, COLLABORATION AND
CONFERENCING SYSTEMS, DEVICE CONTROL SYSTEMS, AV MANAGEMENT SOFTWARE



DIGITAL SIGNAL PROCESSORS, AUDIO CONTROL



POWER AMPLIFIERS



LOUDSPEAKER MANAGEMENT SYSTEMS, DIGITAL SIGNAL PROCESSORS, AUDIO CONTROL



LOUDSPEAKERS, PORTABLE PA SYSTEMS, COMMERCIAL AMPLIFIERS, COMMERCIAL MIXERS



AUDIO EFFECTS HARDWARE AND SOFTWARE



STAGE LIGHTING FIXTURES, LIGHTING CONTROLLERS, ATMOSPHERIC EFFECTS,
ARCHITECTURAL LIGHTING FIXTURES, LED VIDEO DISPLAY SYSTEMS



MIXING CONSOLES, STAGEBOXES, RECORDING INTERFACES, EFFECTS PROCESSORS

**ONE
SOLUTION
FOR ALL**

HARMAN assists our healthcare partners with the day-to-day business of patient care. Our technology streamlines conference and meeting spaces making it easier than ever to consult across the globe at the push of a button. A trusted cornerstone in mission-critical applications for decades, our audio and video distribution solutions provide pixel-perfect images to aid in surgery simulation and other training facilities, as well as hospital command centers.



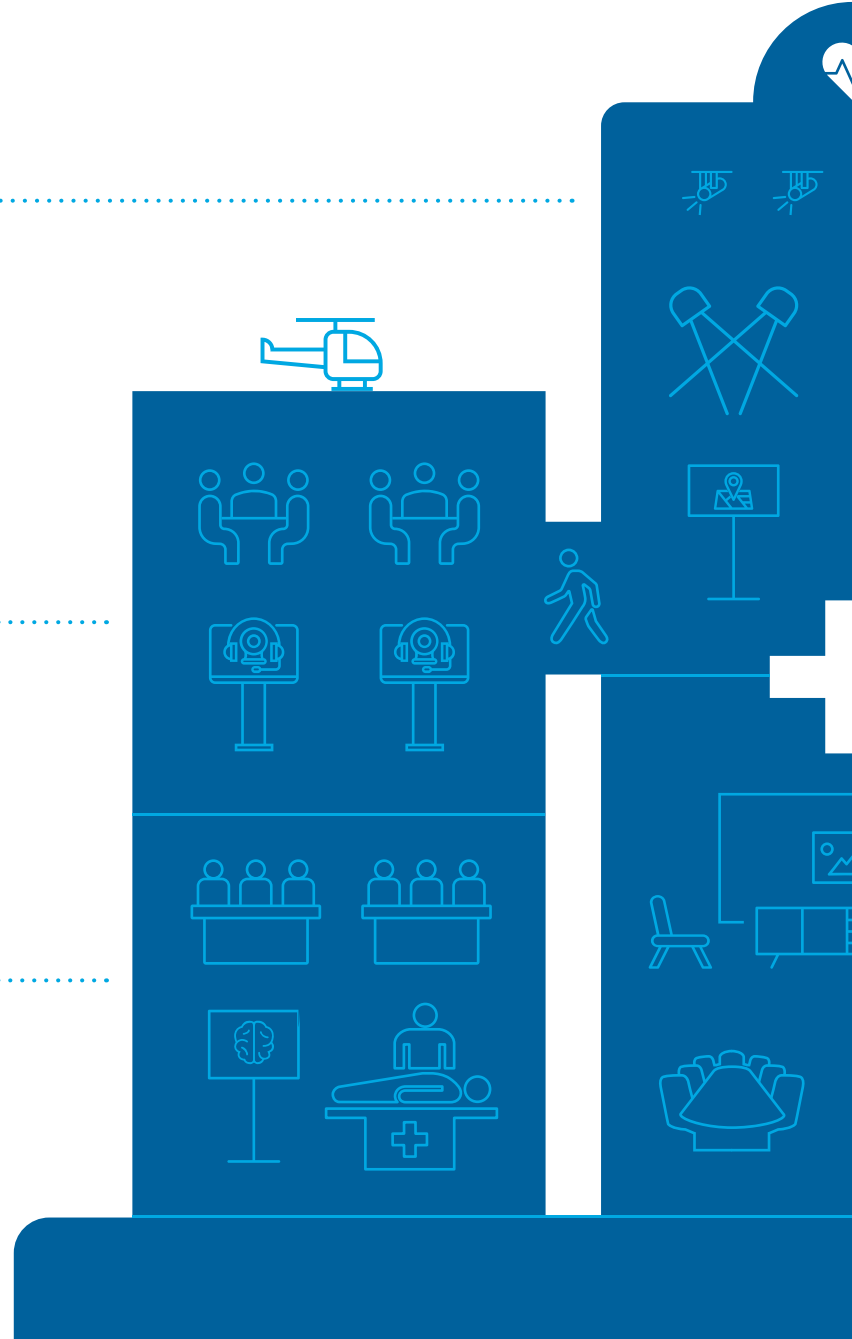
EXTERIOR



HUDDLE SPACE



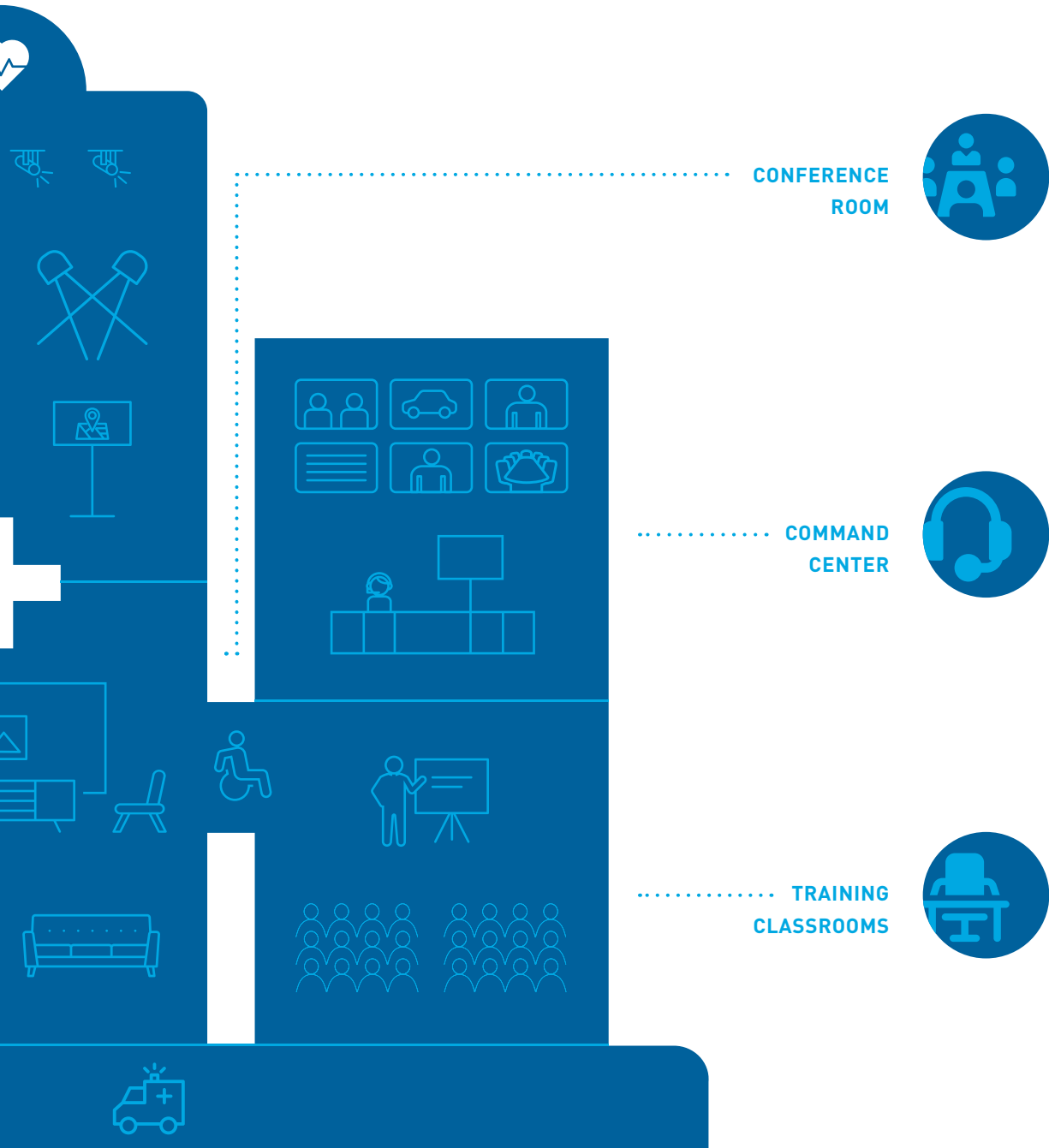
SURGERY SIMULATION



COMMON HARMAN APPLICATIONS IN HEALTHCARE SPACES

Collaboration and Conferencing
Video Signal Distribution

Audio Processing and Distribution
Architectural Lighting



BRINGING TRUSTED TECHNOLOGY TO THE BUSINESS OF HEALTHCARE

HARMAN Professional Solutions is the world's largest professional audio, video, lighting, and control manufacturer. A proven partner in mission-critical applications across the globe, HARMAN empowers the hospitals of the future with secure tools to maximize efficiencies in collaboration, training and monitoring.



COMMAND CENTER

Accurate, Dependable, Clear

Command centers are designed around massive video walls where visual data is displayed in real time for monitoring to ensure resources are used efficiently, and safely. HARMAN AV distribution is at the heart of mission-critical command centers and emergency response centers around the globe. Our secure technologies ensure redundant fail-safe systems, clear AV distribution, and instantaneous global conferencing; while our control overlay and interfaces allow instant access to any content at the push of a button.



SURGERY SIMULATION

A Realistic Training Experience

The importance of training is multiplied exponentially when it involves equipping individuals to provide critical patient care. Trust HARMAN video distribution technology to deliver pixel-perfect video to increase the value of resident training whether it's a video feed from an actual procedure fed to students for observation or a surgery simulation.





TRAINING CLASSROOMS

Collaborate Learning Locally and at a Distance

HARMAN technology empowers students and instructors with an active-learning environment for dynamic content sharing from both the student and instructor for group-based, collaborative activities. In addition, HARMAN provides seamlessly integrated systems which allow professors and students to share content with small groups, the classroom, and distance learners simultaneously.



CONFERENCE ROOM

Present - Collaborate - Share

The conference room is at the heart of important discussions and reviews where critical decisions are made. HARMAN technology ensures that in-room content and content from visiting devices can be shared and compared effectively, web conferencing can be launched instantly, and that everyone in the room is seen and heard. This is all done at a low-cost of ownership with easy set-up and maintenance.



HUDDLE SPACE

Collaboration in an Instant

Designed to enable effective, small-group collaboration, huddle spaces allow effortless viewing and sharing of content from laptops, tablets and mobile devices. HARMAN technology allows staff to quickly collaborate in the room and around the world.



EXTERIOR

Safety and Comfort

HARMAN's Martin LED exterior wash lighting fixtures provide long-lasting, ultra-bright exterior illumination, without heat or yellowing to convey a safe, well-lit, clean appeal to hospital entries and walkways.

WORLDWIDE SOLUTION SUPPORT

HARMAN HAS SALES OFFICES AROUND
THE GLOBE READY TO HELP

Wherever you are, you can always contact us. We have dedicated team members ready and knowledgeable around the world who know our products inside-out.



ASIA PACIFIC

108 Pasir Panjang Road
#02-08 Golden Agri Plaza
Singapore, 118535
+65 6870 5000
hpro.apac@harman.com

CENTRAL AMERICA

Calzada Legaria #549, Piso 4, Suite 428
Colonia Diez de Abril, Delegaci n Miguel Hidalgo
CP11250, Ciudad de M xico, Mexico
+55 15550322

CHINA

3004 Chong Hing Finance Center
No.288 Nanjing Road (W)
200003, Shanghai, P.R.C
+86 21 2306 0063

EMEA

Westside London Road
Hemel Hempstead
HP3 9TD
United Kingdom
+44 1707668034

INDIA

HARMAN India International PVT.
LTD.Salarpuria Sattva Knowledge
CourtOffice-1, Wing 'A' & 'B' 6th floor,
Plot No. 9, Phase I , Doddenakkundi
Industrial Area, Bearing Khata bearing
Sl. No. 299 old No.62, situated at
Survey No. 77, Doddenakkundi Village,
K.R. Puram Hobli, Bangalore East
Taluk, Bangalore - 560048, Karnataka
indiaproinfo@harman.com

NORTH AMERICA

8500 Balboa Blvd
Northridge, CA 91329
USA
+1 818 893 8411

3000 Research Drive
Richardson, TX 75082
USA
+1 469 624 8000

SOUTH AMERICA

Rua Cincinato Braga, 340, conjunto 51
(Delta Plaza building)
Bela Vista, S o Paulo, SP
Brazil, 01333-010
+55 11 2699 1199



FOR MORE INFORMATION visit pro.harman.com